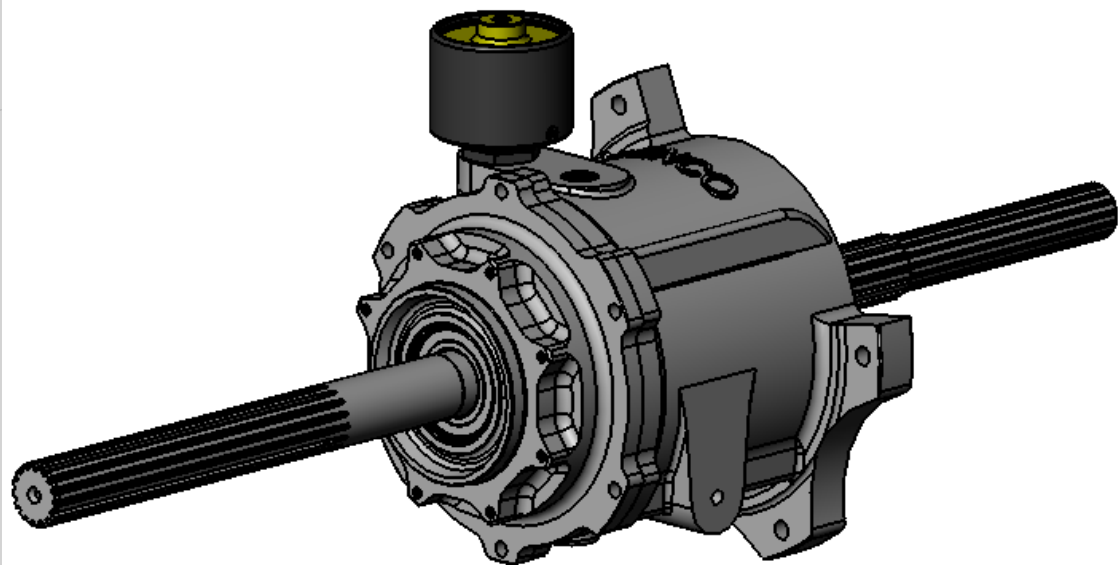
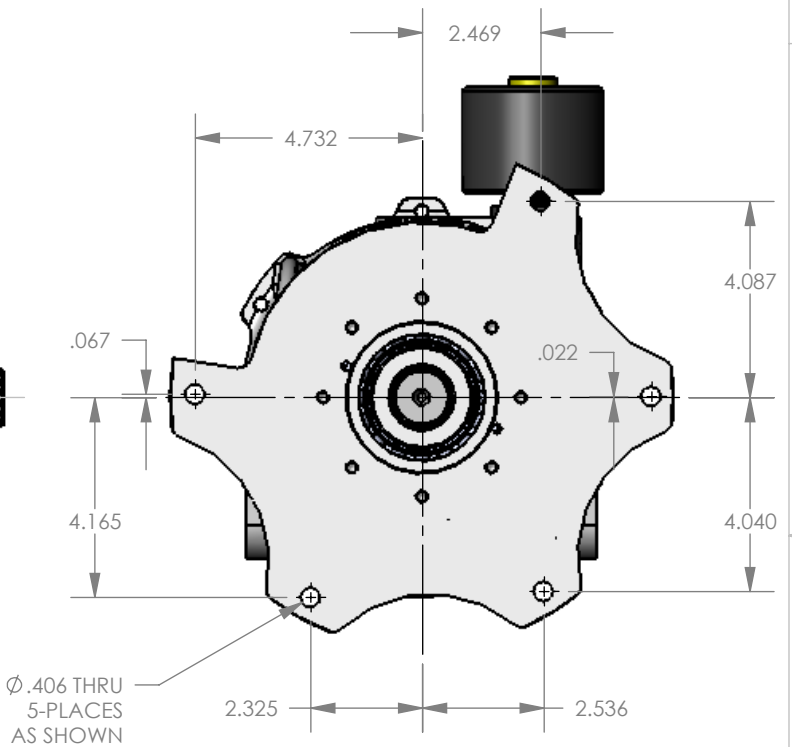
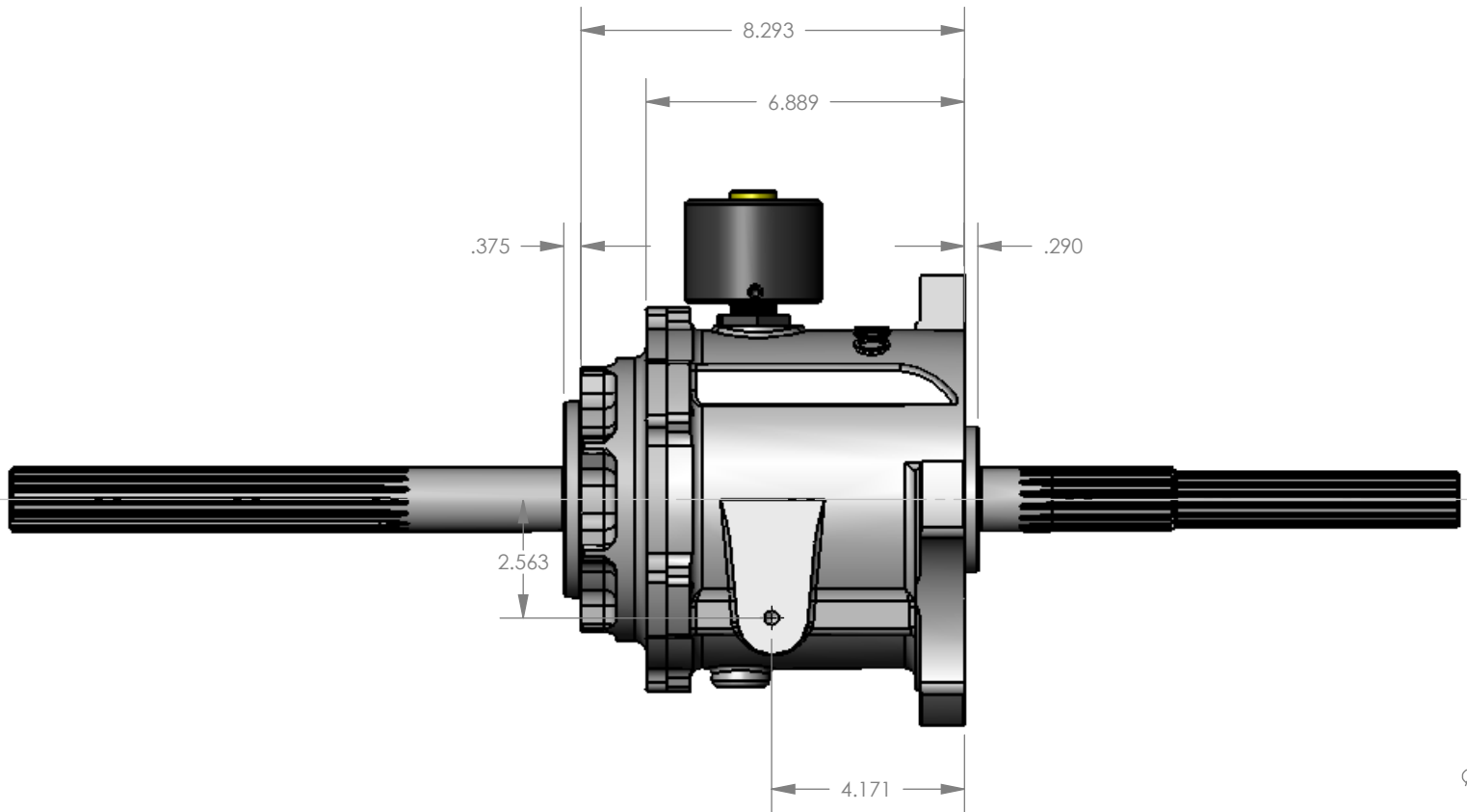
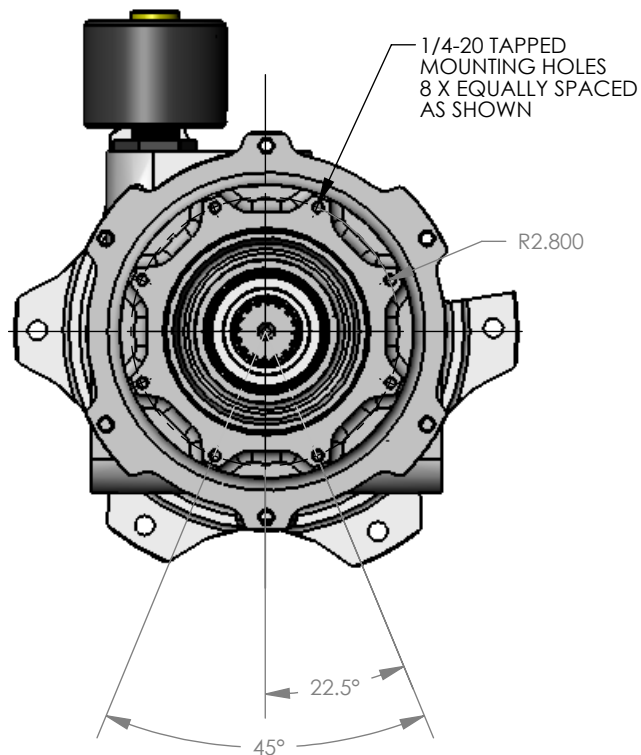


THE INFORMATION CONTAINED IN THIS DRAWING IS THE SOLE PROPERTY OF  
LENCO EQUIPMENT COMPANY ANY REPRODUCTION IN PART OR WHOLE WITHOUT  
THE WRITTEN PERMISSION OF LENCO EQUIPMENT COMPANY IS PROHIBITED.

REVISIONS			
REV.	DESCRIPTION	DATE	APPROVED

DWG. NO. **CS3-M 2SPD**



MATERIAL PROCESS SPECIFICATIONS		UNLESS OTHERWISE SPECIFIED DIMENSIONS ARE IN INCHES TOLERANCES ARE: FRACTIONS    DECIMALS    ANGLES ±.02    .XXX±.001    ±1° .XX±.003 .X±.005	CAD GENERATED DRAWING, DO NOT MANUALLY UPDATE		<b>LENCO</b> EQUIPMENT COMPANY INC. 6470 FEDERAL BLVD. LEMON GROVE CA 91945-1310			
HEAT TREAT PROCESS			APPROVALS	DATE	<b>CS3-M 2-SPEED ONLY MOTORCYCLE TRANS DOUBLE SPRAG</b>			
CORE			DRAWN <b>JON SUMEK</b>	<b>12/06/2010</b>				
ROCKWELL			CHECKED					
CASE DEPTH			RESP ENG					
ANODIZE			MFG ENG		SIZE B	DWG. NO.	<b>CS3-M 2SPD</b>	REV. <b>A</b>
COLOR			DO NOT SCALE DRAWING	QUAL ENG	SCALE	CAD FILE:		SHEET 1 OF 1